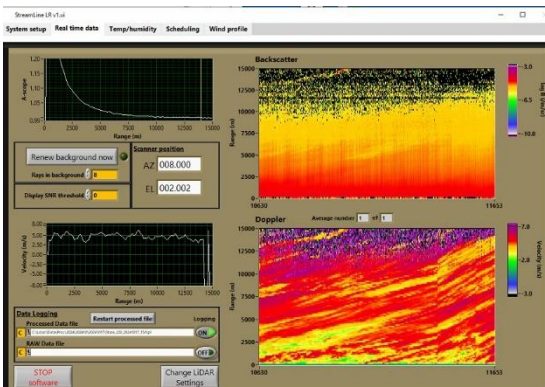
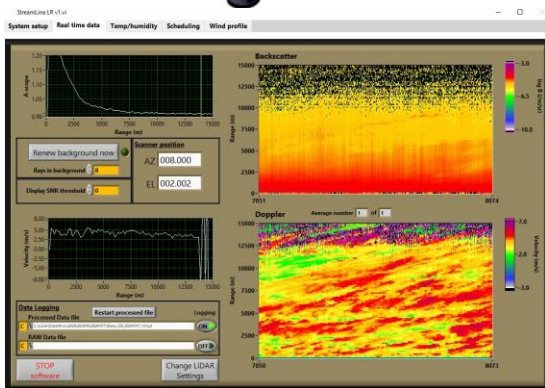


Doppler Lidar Streamline AllSky LR

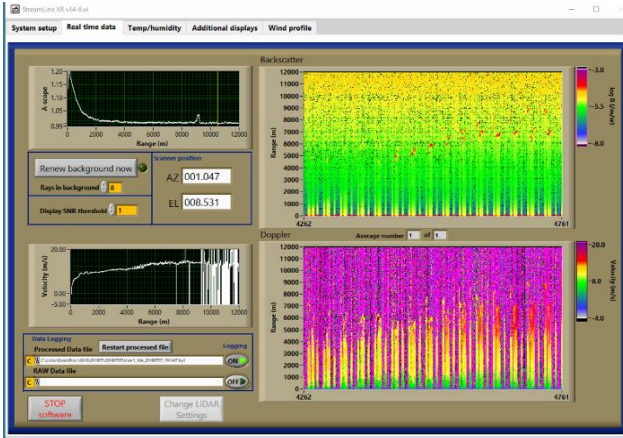


- Compact pulsed Doppler with doubled signal power lidar compared to Streamline XR+
- 100 mm aperture
- Improved range coverage, max. observed range > 12 km
- Robust industrial PC with Win OS, 1 TB hd (min.)
- Option: adjustable pulse lengths (80 ns, 160 ns, 320 ns)
- Temperature range -20 ... +45 °C
- 24/7 unattended self monitored measurements
- All-sky scanner head, elevation range $\pm 105^\circ$
- User defined scan patterns stored in scan files
- Combined or sole use of pre-defined and/or user defined scan patterns
- Step-stare and continuous scanning modes available
- Scan patterns can be synchronised to GPS time
- Nominal signal analysing range 150 m ... 15 km
- Experienced vertical range of radial wind within Output rate 8.5 Hz (max., raw mode) or 1 ... 60 s
- Real-time derivation of profiles of wind speed and wind direction from radial winds
- Wind profile upfresh rate 10 ... 600 s (typ.)
- Analysing range ± 38 m/s @ 100 MHz
- Wind range 0 ... 60 m/s (@ elevation angle of 60°)
- Range gating ≥ 18 m, increments 6 m
- Accuracy $\leq \pm 0.2$ m/s or $\leq \pm 2\%$ (max. rating applies)
- Precision of the wind direction $\leq \pm 3^\circ$ @ wind speed > 3 m/s
- Raw data storage, UDP output
- 2 RJ45 Ethernet ports, 1 x monitor, 2 x USB
- Access by LTE/UMTS modems
- Body dimension 630 x 530 x 850 mm; weight 115 kg
- Power consumption 250 W Lidar / 350 W cooling

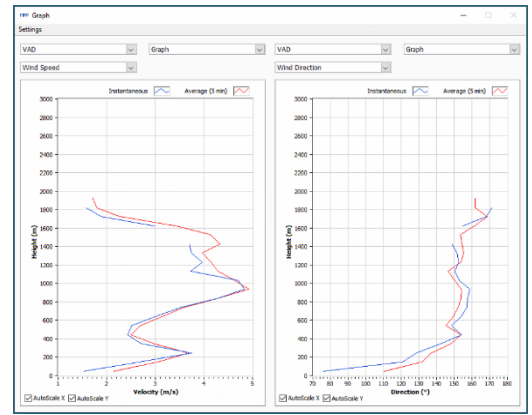


Samples of long range measurements

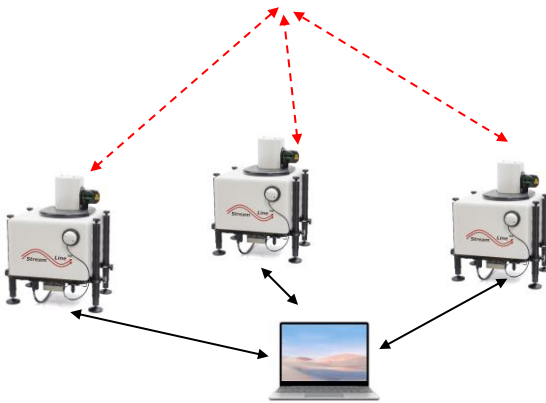
Samples of radial wind data for VAD scans



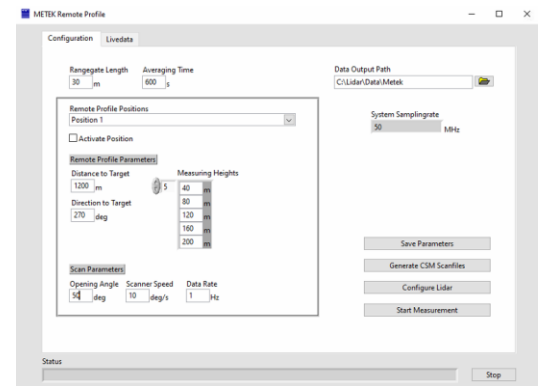
Wind profiles online derived from VAD scans



The post processing software (Metek) evaluates the radial wind data of the Stream Line system (left) and derives online or offline wind data with flexible, user adjustable evaluation parameters and noise filters.



Sync-mode software (see above) installed at a remote PC allows synchronization of up to 3 Stream Line systems via Ethernet to measure simultaneously in the same measuring volume to derive the instantaneous 3D wind vectors.



Remote wind profile software offers scan patterns to install up to 4 individual virtual wind masts. All scanning parameters are automatically adjusted according to the pre-selected measuring requirements, e.g. range and directions of masts, measuring heights, scan speed, scanning angle, averaging period, etc.



Power supply box

- 110 ... 220 VAC/24 VDC/10 A converter for Lidar unit
- 110 ... 230 VAC/24 VDC/20 A converter for cooling units
- All connectors IP 67
- 24 VDC re-chargeable battery, 3.6 Ah
- Adjustable stand-alone operation time before gentle shutdown
- Overvoltage protection for power line and Ethernet
- Modem antenna assembled ready to use by LTE/UMTS modem



METEK GmbH, Fritz-Strassmann-Str. 4, 25337 Elmshorn, Germany
 Phone: +49 4121 121 43590, Fax: +49 4121 4359 20
 E-mail: info@metek.de, Internet: <http://www.metek.de>

METEK Meteorologische Messtechnik GmbH

