

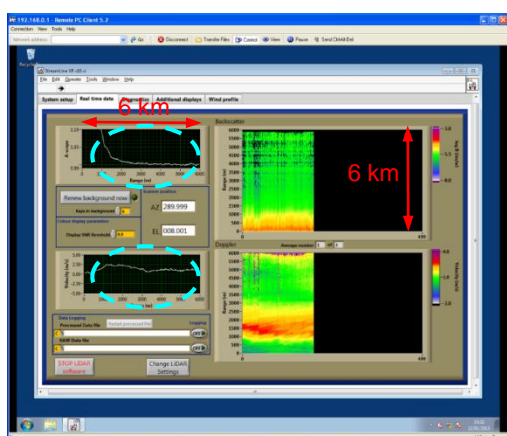
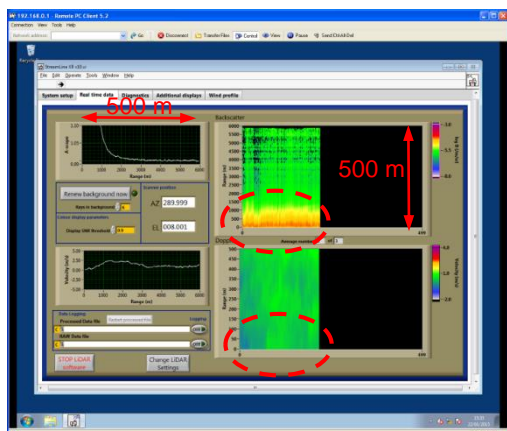
## Doppler Lidar Stream Line XR



- New compact version of the pulsed Doppler Lidar Stream Line
- Enclosure size reduced by 25%
- Significant range extension by more powerful transmitter
- New high performance signal processor
- All-sky scanner capability for upper hemisphere
- Scanner range extendable to  $\pm 105^\circ$
- Full control of all scanner parameters
- Scan queues synchronised to GPS time
- Step-stare and continuous scanning modes available
- User defined scan patterns stored in files
- Combined or sole use of pre-defined and/or user defined scan patterns
- Overlapping of range gates selectable
- Raw data storage, UDP output
- On- and offline evaluation of wind profiles from arbitrary scan patterns
- Very robust optics and mechanics
- Wide operational temperature range
- Optional METEK power supply including GPRS/UMTS modems and overvoltage protection for power line and ethernet link
- Stand alone trailer version available
- Rental services

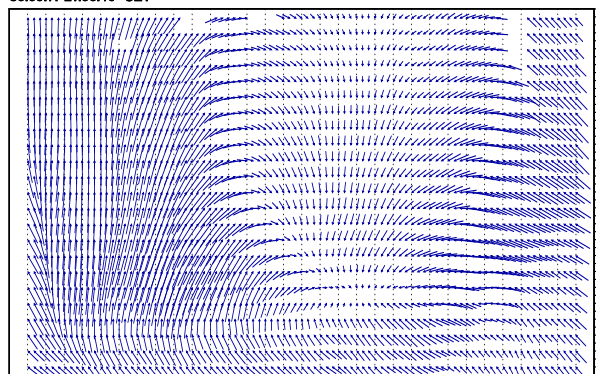


# Lidar Stream Line XR



- Samples to the left show in the upper diagrams the backscatter intensity and show in the lower diagrams the radial Doppler component
- Vertical range of the upper sample is 500 m and of the lower sample 6 km
- No blind zone in lowest ranges, first usable range gate is the first gate
- New signal processor extracts even at low SNR consistent Doppler estimates
- Profile evaluation for arbitrary scan patterns in on- and offline mode using proven algorithms (verified by DWG™)
- Data output compatible to METEK Graphics offering times series, vector plots, profiles, time-height-indicator, statistics, etc. (see below)

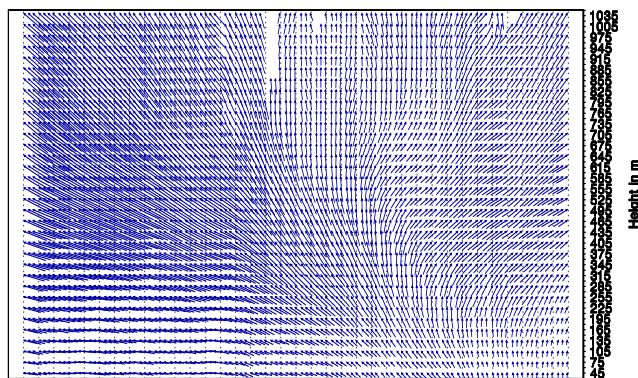
30.09.11 21:00:46 CET



10'-Averages Wind Vectors ( $V_x$ )  
NDR tower, Hamburg

METEK

25.10.11 18:00:36 CET



10'-Averages Wind Vectors ( $V_x$ )  
NDR tower, Hamburg

METEK

- Weight approximately 85 kg
- Enclosure dimensions 630 x 530 x 400 mm
- Power requirement 24 V DC, approx. 150 W
- Wide ambient temperature ranges of -20 ... +40 °C

