

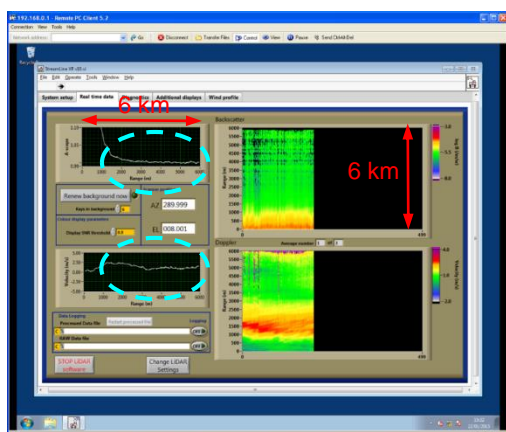
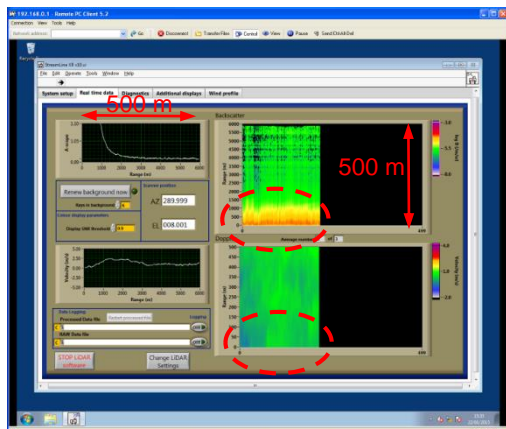
NEW !



Lidar Stream Line XR



- New compact version of the Stream Line pulsed Doppler Lidar
- Enclosure size reduced by 25%
- More powerful transmitter extends range by 50 – 100 %
- New high performance signal processor unit
- All-sky scanner capability for upper hemisphere
- Scanner range extendable to $\pm 105^\circ$
- Scan patterns synchronised to GPS time
- Step-stare and continuous scanning modes available
- Full control of all scanner parameters
- User defined scan patterns stored in scan files
- Combined or sole use of pre-defined and/or user defined scan patterns
- Overlapping of range gates selectable
- Raw data storage, UDP output
- Very robust optics and mechanics
- Wide operational temperature range
- Optional power supply with overvoltage protection for power lines and ethernet
- Access by LTE/UMTS/GPRS-modems
- Rental services for stand alone trailer versions available

Lidar Stream Line XR



- Samples to the left show in the upper diagrams the backscatter intensity and in the lower diagrams the radial Doppler component
- Vertical range of the upper sample is 500 m and of the lower sample 6 km
-  No blind zone in lowest ranges, first usable range gate is the first gate
-  New signal processor extracts consistent Doppler estimates even at low SNR

- **Mass approximately 65 Kg**
- **Enclosure dimensions 630 x 530 x 400 mm**
- **Power requirement 24 V DC, 150W**
- **Extra 340 W for enhanced active cooling option for 50°C ambient temperatures**

